



Northern
POWER SYSTEMS

32,000 SF or more available at the Wilson Industrial Park, Barre VT



Location: **29 Pitman Rd, Barre VT 05641**

Commercial Space for Lease: **32,000 square feet is a blend of both office and warehouse/high-bay manufacturing space. The space is a portion of an approximately 115,000 SF Manufacturing/Assembly Facility. Access to shared facility space to include 2,095 SF Paint Booth and 1,056 SF Welding Area (designated hot works area). Smaller/larger space needs or multiple tenants considered.**

Status: **Built in 1981, Municipal Water and Sewer, Rail Spurs lead into the facility with access to a 90 Ton Gantry Crane.**

Stories: **2** Parking: **155± spaces** Rent: **\$6.00 /SF NNN** Recorded Owner: **Malone Properties**



Amenities: **Millstone Trails System, Barre Town Recreational Park, Thunder Road Racetrack, Snowmobile Trail System (VAST).**

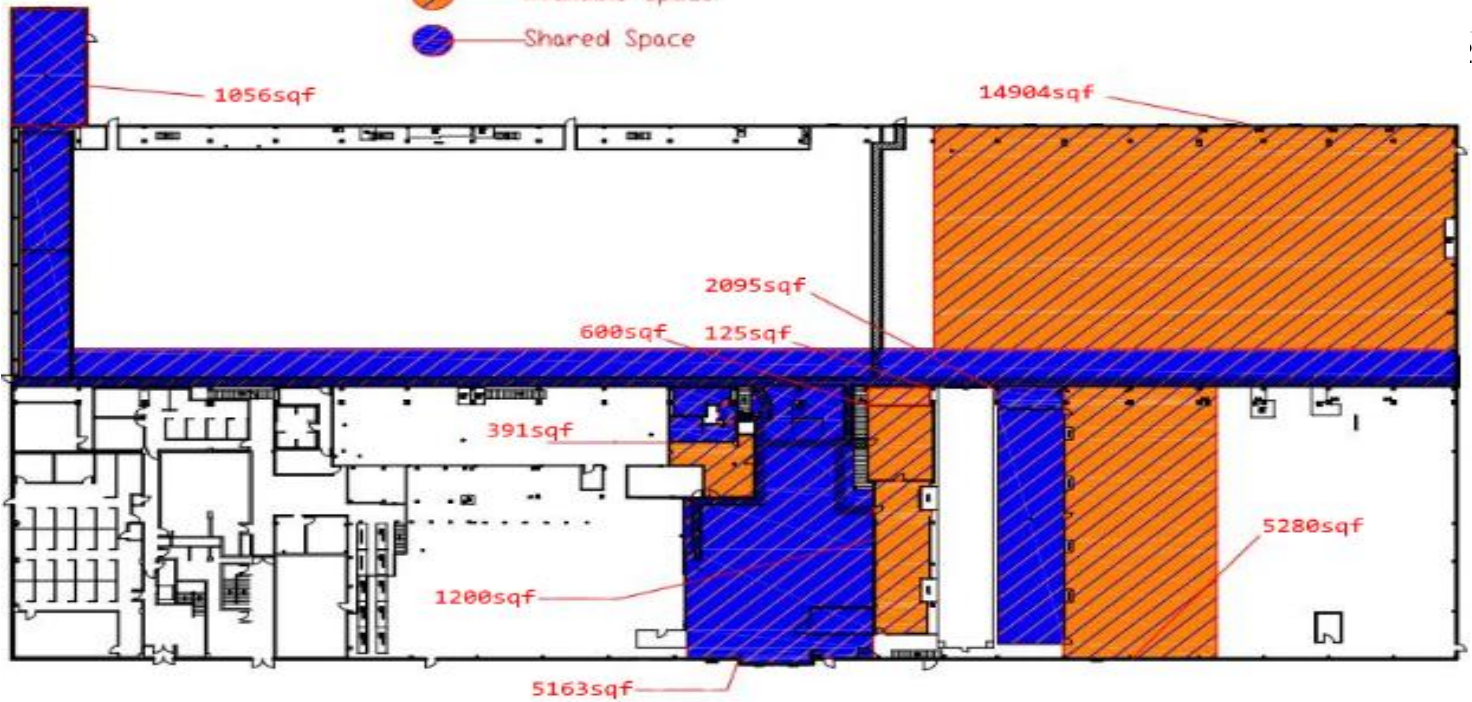
Pitman Road is a paved town road that runs through the industrial park. There is also a rail spur that runs through the park.

29 Pitman Road, Barre, VT 05641 USA
Tel: +1 877 906 6784



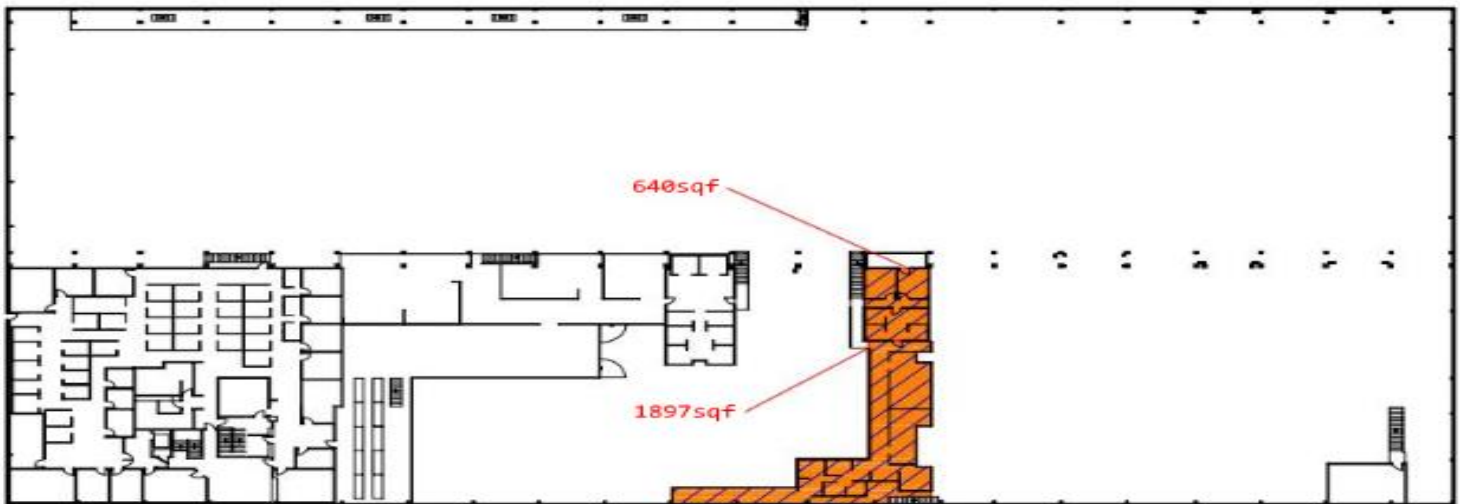
1st Floor

-  Available Space
-  Shared Space



2nd Floor

-  Available Space
-  Shared Space





Northern
POWER SYSTEMS



Internal High Bay



Shipping and Receiving Dock



Interior Office



Interior Mezzanine



Employee Break Room



Conference Room